

Polar Prediction

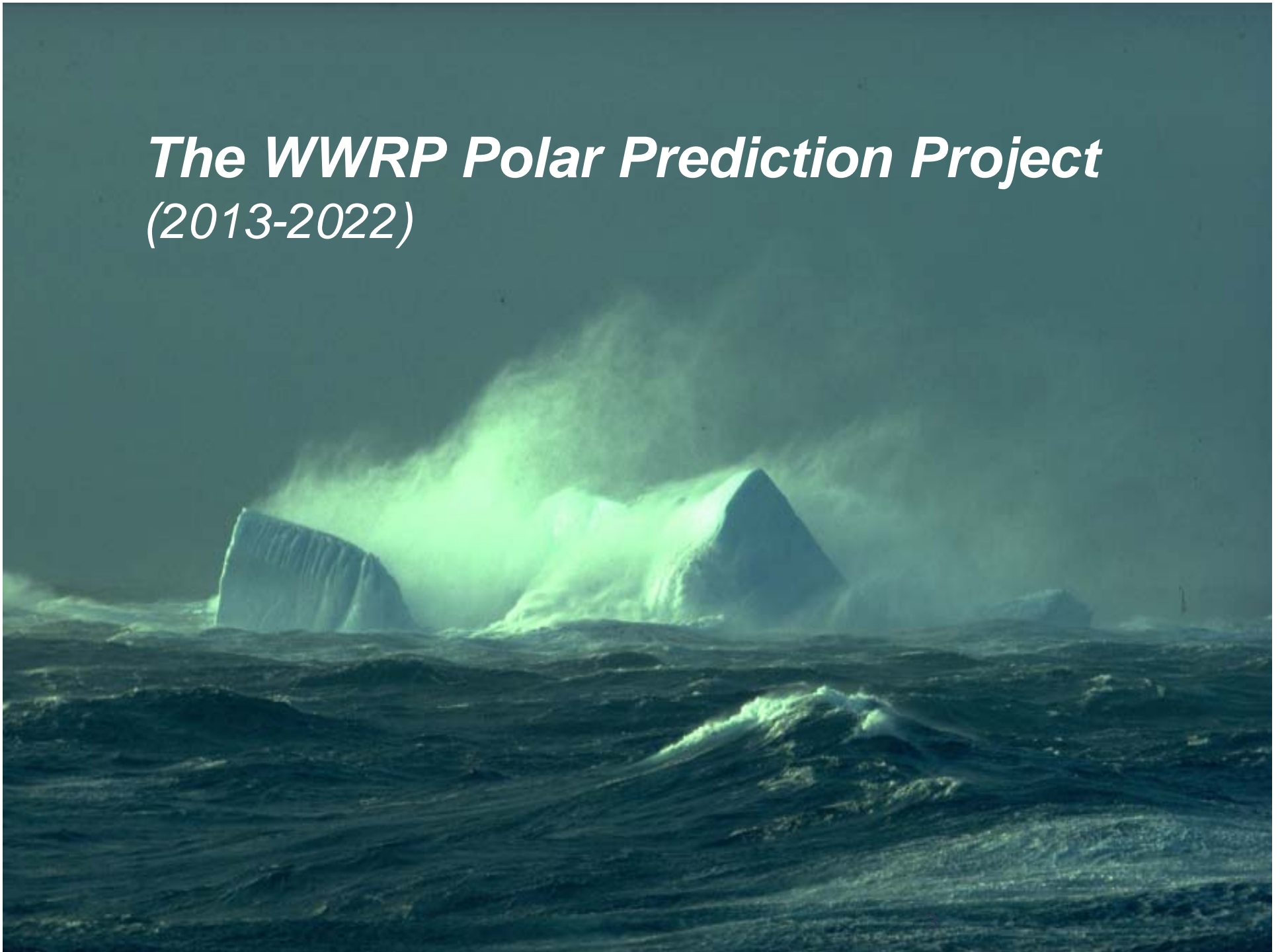
Thomas Jung

Chair of the WWRP Polar Prediction Project

Alfred Wegener Institute
Helmholtz Centre for Polar and Marine Research
Germany

- The WWRP Polar Prediction Project
- The WCRP Polar Climate Predictability Initiative (PCPI)
- Possible areas of collaboration
- Discussion

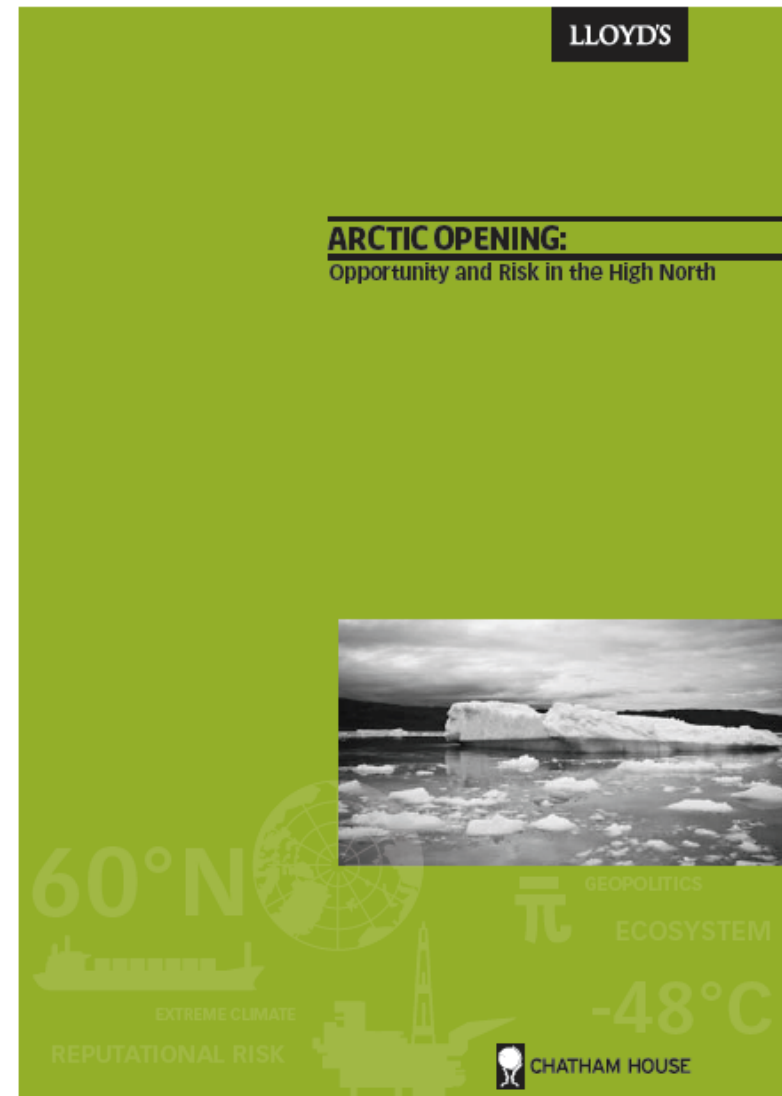
***The WWRP Polar Prediction Project
(2013-2022)***



Opportunity and risk

Some statements from the report:

- The Arctic is likely to attract substantial investment over the coming decade (\$100 bn)
- The environmental consequences of disasters in the Arctic are likely to be worse than in other regions
- Significant knowledge gaps across the Arctic need to be closed urgently



„Promote cooperative international research enabling development of improved weather and environmental prediction services for the polar regions, on time scales from hourly to seasonal.“

PPP Steering Group

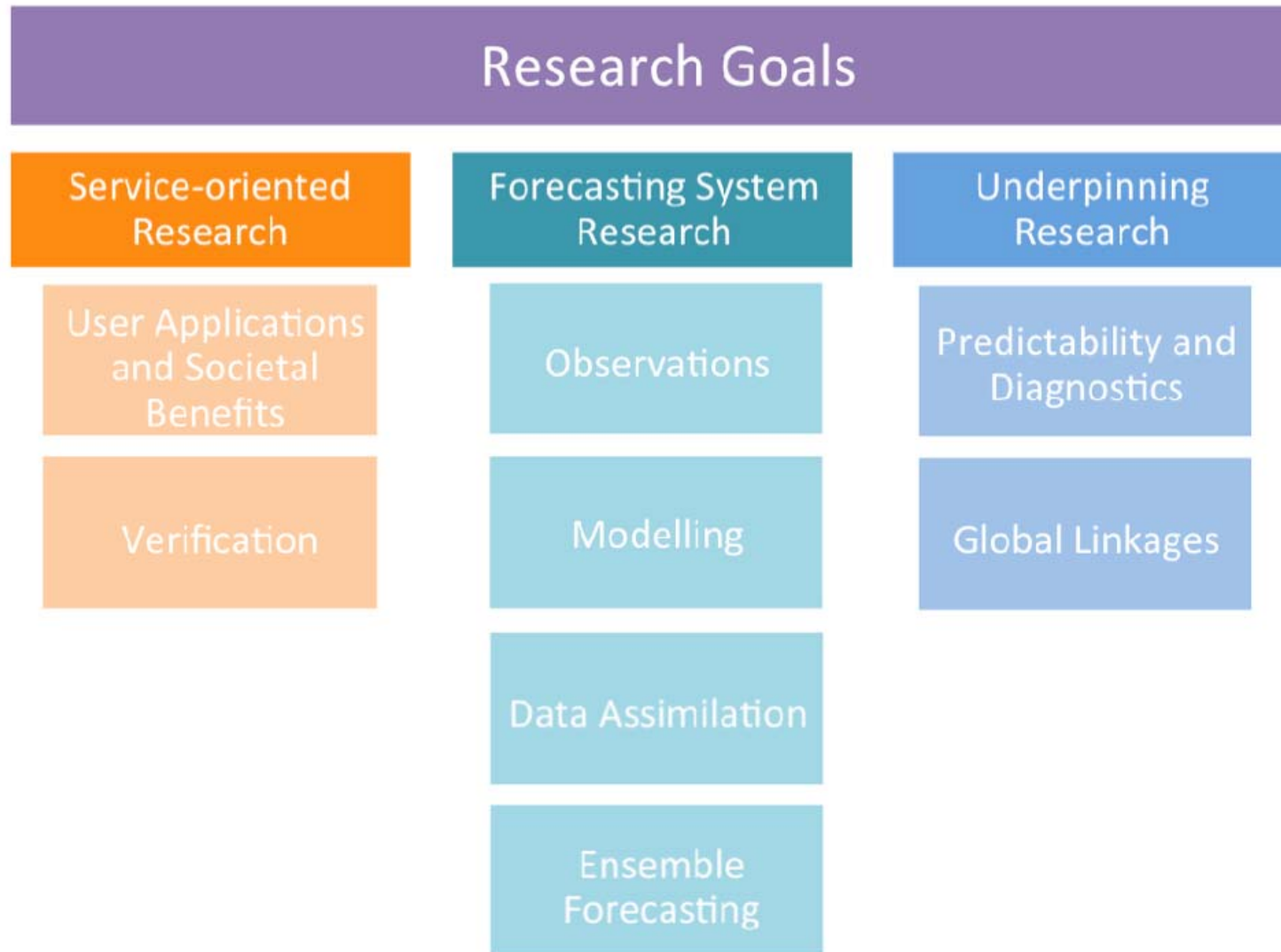
- Thomas Jung (chair)
- Peter Bauer
- David Bromwich
- Paco Doblas-Reyes
- Chris Fairall
- Marika Holland
- Trond Iversen
- Brian Mills
- Pertti Nurmi
- Don Perovich
- Phil Reid
- Ian Renfrew
- Gregory Smith
- Gunilla Svensson
- Mikhail Tolstykh

SG4, Boulder, 1-3 October 2013



- Jonny Day (APECS liasion)
- Neil Gordon (WMO consultant)

Research areas



Source: PPP Implementation Plan

- Sea ice prediction
 - Explore predictability
 - Develop of coupled prediction systems
- Linkages between polar regions and lower-latitudes
 - Determine mechanisms and strengths
 - Implications for predictions in middle latitudes
- Improved availability of observations from polar regions
- The Year of Polar Prediction (YOPP)

Sea ice prediction

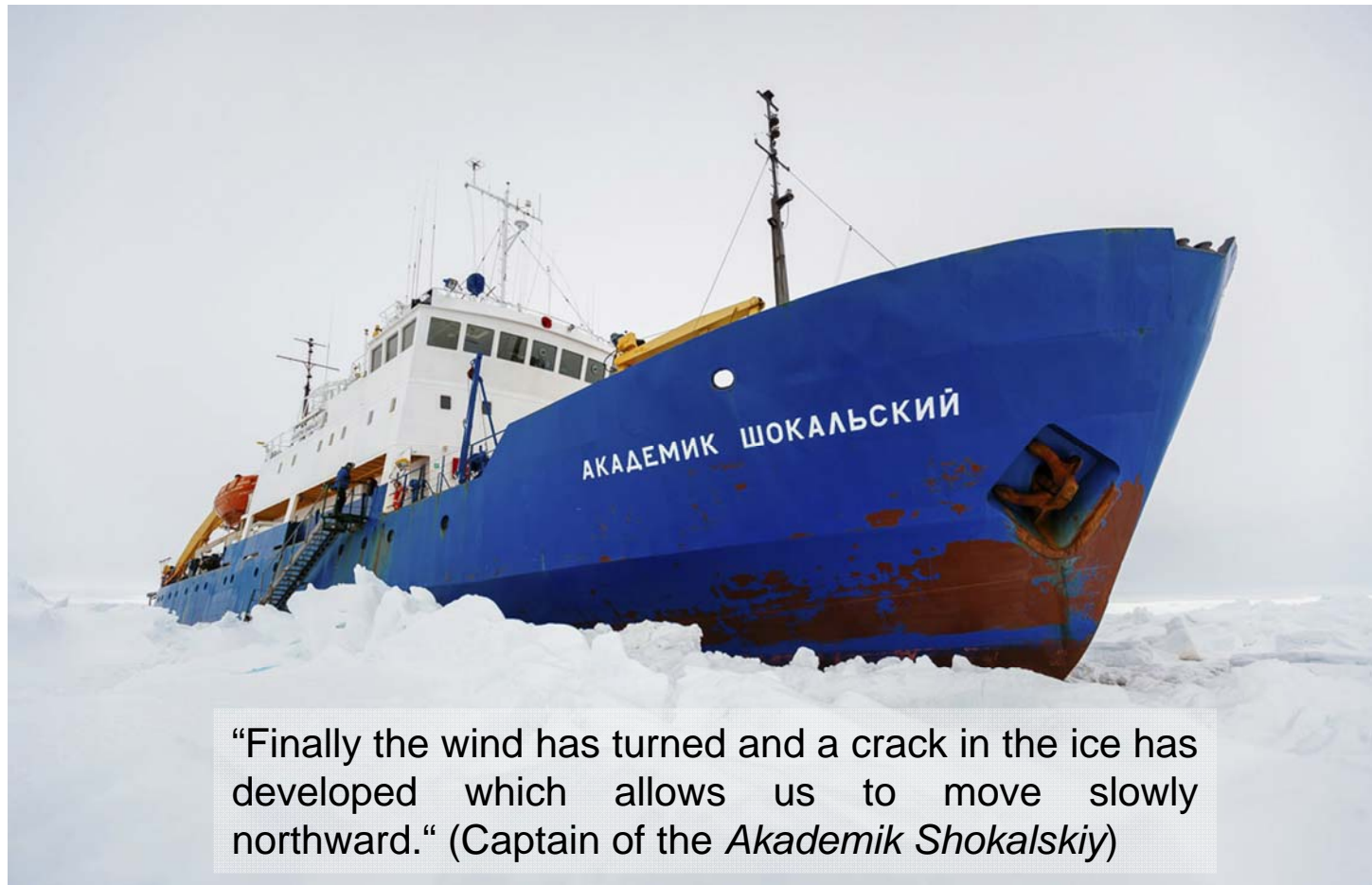


Photo: Andrew Peacock/www.footloosefotography.com

The Russian ship MV Akademik Shokalskiy is trapped in thick Antarctic ice 1,500 nautical miles south of Hobart, Australia, Friday, Dec. 27, 2013